

STA-RITE®

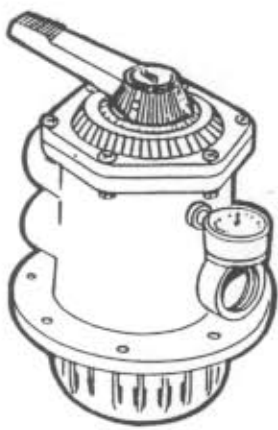
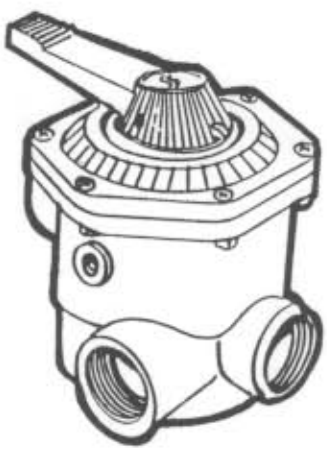
OWNER'S MANUAL

MULTI-PORT FILTER VALVE

INSTALLATION

OPERATION

PARTS



MODELS

SIDE MOUNT – 1-1/2"
14964-0014
WC212-143P
Pkg. F-150
Pkg. F-151

TOP MOUNT – 1-1/2"
14962-0105

SIDE MOUNT – 2"
14971-0012
WC212-144P
WC212-138B
Pkg. F-152
WC212-150PN
WC212-150PA

This manual should be furnished to the end user of this valve; its use will reduce service calls and chance of injury and will lengthen valve life.

Sta-Rite Pool/Spa Group
600 S. Jefferson Street, Waterford, WI 53185
North America: 800-752-0183, FAX 800-582-2217
International: 414-728-5551, FAX: 414-728-4481, TELEX: ITT 4970245
Oxnard, CA • Orlando, FL • Union City, TN • Delavan, WI • Mississauga, Ont

READ AND FOLLOW SAFETY INSTRUCTIONS!



⚠ DANGER

⚠ WARNING

⚠ CAUTION

⚠ This is the safety alert symbol. When you see this symbol on your system or in this manual, look for one of the following signal words and be alert to the potential for personal injury.

⚠ DANGER warns about hazards that will cause death, serious personal injury, or major property damage if ignored.

⚠ WARNING warns about hazards that can cause death, serious personal injury, or major property damage if ignored.

⚠ CAUTION warns about hazards that will or can cause minor personal injury or property damage if ignored.

NOTICE indicates special instructions not related to hazards.

Carefully read and follow all safety instructions in this manual and on equipment. Keep safety labels in good condition; replace if missing or damaged.

⚠ WARNING **Hazardous pressure** Incorrectly installed or tested equipment may fail, causing severe injury or property damage. Read and follow instructions in owner's manual when installing and operating equipment. Have a trained pool professional perform all pressure tests.

1. Do not connect system to a high pressure or city water system.
2. Use equipment only in a pool or spa installation.
3. Trapped air in system can cause explosion. **BE SURE** all air is out of system before operating or testing equipment.

Before pressure testing, make the following safety checks:

- Check all clamps, bolts, lids, and system accessories before testing.
- Release all air in system before testing.
- Tighten Sta-Rite trap lids to 30 ft. lbs. (4.1 kg-cm) torque for testing.
- Water pressure for test must be less than 25 PSI (172 kPa).
- Water Temperature for test must be less than 100° F. (38° C).
- Limit test to 24 hours. After test, visually check system to be sure it is ready for operation. Remove trap lid and retighten hand tight only.

NOTICE: These parameters apply to Sta-Rite equipment only. For non-Sta-Rite equipment, consult manufacturer.

LIMITED WARRANTY

Pumps, filters, spa systems, skimmers, underwater lights (except bulbs), accessories and fittings manufactured by Sta-Rite are warranted to be free of defects in material and workmanship for one (1) year from date of installation.

HRPB, DEPB and System 3 are warranted against defects in material and workmanship for a period of ten (10) years from date of installation. Internal filter components and valves are warranted for a period of one (1) year from date of installation.

The foregoing warranties relate to the original consumer purchaser ("Purchaser") only. Sta-Rite shall have the option to repair or replace the defective product, at its sole discretion. Purchasers must pay all labor and shipping charges necessary to replace the product covered by this warranty. Requests for warranty service must be made through the installing dealer. This warranty shall not apply to any product that has been subject to negligence, misapplication, improper installation or maintenance, or other circumstances which are not in Sta-Rite's direct control.

This warranty sets forth Sta-Rite's sole obligation and Purchaser's exclusive remedy for defective products.

STA-RITE SHALL NOT BE LIABLE FOR ANY CONSEQUENTIAL, INCIDENTAL OR CONTINGENT DAMAGES WHATSOEVER.

THE FOREGOING WARRANTIES ARE EXCLUSIVE AND IN LIEU OF ALL OTHER EXPRESS WARRANTIES, IMPLIED WARRANTIES, INCLUDING BUT NOT LIMITED TO THE IMPLIED WARRANTIES OF MERCHANTABILITY AND FITNESS FOR A PARTICULAR PURPOSE, SHALL NOT EXTEND BEYOND THE DURATION OF THE APPLICABLE EXPRESS WARRANTIES PROVIDED HEREIN.

Some states do not allow the exclusion or limitation of incidental or consequential damages or limitations on how long an implied warranty lasts, so the above limitations or exclusion may not apply to you. This warranty gives you specific legal rights and you may also have other rights which vary from state to state.

Supersedes all previous publications.

Sta-Rite Industries, Inc., 600 S. Jefferson St., Waterford, WI 53185

GENERAL

- Inspect valve upon receipt and file claim with carrier if parts are damaged or missing.
- Valve may be used with Sta-Rite DE or sand filters. See Table I.
- Mating half of unions are on filters shown on Table I.

Connecting Multi-Port Valve To Filter System

For filters listed below, select correct valve clamp connector kit from the chart. Use with valves 14964-0014, 14962-0105, 14971-0012 (Purchase separately).

Table I - Filters and connector kits to use with valves. Pkgs. F-150, F-151 and F-152 include valve and connector kit. See Pages 6 and 7.

Valve No. 14971-0012 Use with:		Valve No. 14962-0105, 14964-0014 Use with:		Valve No. WC212-143P, WC212-144P Use with:	
Filter	Kit	Filter	Kit	Filter	Kit
DEP36 DEP51 DEP83	24750-0341	DES25 DES36	24750-0331	DEP36-01 DEP51-01 DEP83-01	NONE
DES51 DES60		HRS16 HRS20		DES25-01 DES51-01 DES60-01	
HRP20 HRP24 HRP30 HRS24	24750-0624	DEP36	24750-0624	HRP20-01 HRP24-01 HRP30-01	
DES25 DES36		HRP20 HRP24 HRS24		HRS16-01 HRS20-01 HRS24-01	
HRS16 HRS20					

- **NOTICE:** WC212-143P and WC212-144P valves are furnished with union connections, matching the connections of the filter ports. DO NOT use pipe sealants on union collar (nut).
- Use care before assembly not to damage union sealing surfaces or "O" ring. Install union "O" rings in groove; tighten union collar hand tight.
- **FOR SLIP FITTINGS:** Use correct solvent/cement when fitting piping or adapters to slide valve. The valve body is ABS plastic, thus any good quality ABS to PVC solvent can be used, such as Weld-On #793 or #710. Use P70 (purple) primer on PVC components only. Allow a minimum of four hours drying time prior to pressure testing or operation. If ABS adapters are glued into valve ports in lieu of PVC fittings, use Weld-On Solvent #771, #1707 or #773.

⚠WARNING To avoid serious personal injury or property damage, follow cement manufacturer's instructions exactly.

- **NOTICE: FOR THREADED FITTINGS:** Use Plasto-Joint Stik¹ only. Other substances may degrade plastic and create poor joints and leaks. Do not overtighten.

¹ Lake Chemical Co., Chicago, IL

⚠ WARNING

**Hazardous pressure.
Can cause severe
injury or major
property damage
from valve blow up.
Release all pressure
and read instructions
before working on
system.**

FUNCTIONS OF THE MULTI-PORT VALVE

- ⚠** To avoid severe injury and major property damage, stop pump before changing handle positions.
- ⚠** To avoid major property damage due to flooding, make sure pointer is accurately positioned and down all the way before restarting pump.
- Press down on handle to release pressure before turning.
 1. **FILTER** – Normal position during operation of system.
 2. **BACKWASH** – Position when operating system to purge filter of accumulated debris. This normally is necessary when filter pressure gauge reads 10 PSI higher than starting pressure on a clean filter. Consult your filter operating instructions.
 3. **RINSE** – This position is only used with sand filters and is designed to flush stray sand from system before returning to filter operation after backwashing. Consult your filter operating instructions.
 4. **CLOSED** – Valve may be set in closed position when servicing filter tanks located below water level.
 5. **RECIRCULATE** – This position permits pump to continue recirculating water (chemicals, heat, etc.) without flow through filter. This is advantageous when filter, or its components are being repaired or replaced.
 6. **WASTE** – This position permits draining or lowering of pool water level. When pump is turned off in this position, quickly move handle to another position to avoid air getting into piping.

VALVE MAINTENANCE

- ⚠** To avoid severe personal injury and major property damage, stop pump and release all pressure from system before servicing valve.
- No regular maintenance is required for proper operation of multi-port valve.

Winterizing For Freezing Climates:

- Place valve handle in an intermediate position, between regular setting positions.

Part Replacement:

- **Replacing Handle:**
 1. **STOP PUMP** and release all pressure from system.
 2. Place handle in "FILTER" position.
 3. Remove stainless steel pin.
 4. Remove handle and replace with new one, making sure pointer is in "FILTER" position.
 5. Replace stainless steel pin, tapping lightly into place with hammer and punch.

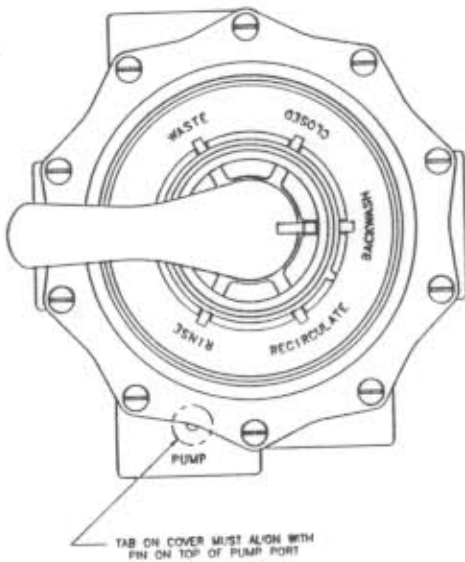


Figure 1—Cover alignment

To prevent flooding, make sure that system is drained or isolation valves are closed before opening multi-port valve.

- **Replacing Cover and Plug Assembly (as a unit):**

1. STOP PUMP and release all pressure from system.
2. Remove all bolts and nuts around perimeter of cover.
3. Remove assembly by lifting straight up.
4. Align cover pin (see Figure 1) and install new cover and plug. Press down on cover to allow bolts to engage nuts; tighten each bolt securely.

- **Replacing Internal Valve Parts:**

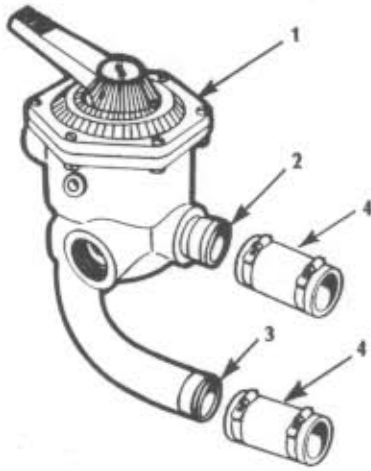
1. STOP PUMP and release all pressure from system.
2. Place handle in "FILTER" position.
3. Remove handle pin and handle.
4. Remove washer.
5. Remove all bolts and nuts around perimeter of cover.
6. Remove cover by lifting straight up, while holding plug shaft down with thumb.
7. While disassembled, check condition of plug, rubber gasket, spring, "O" ring and internal plastic washer. If any of these parts appear worn, replace them.
8. Before reinstalling cover, be sure plug is in same position as when cover was removed.
9. Make sure tab on valve cover aligns with pin on top of pump part, (see Fig. 1). Press down on cover to allow bolts to engage nuts. Tighten each bolt securely.
10. Replace washer, handle and steel pin, making sure handle is in filter position.

- **Replacing Plug Gasket (2" Valve):**

1. STOP PUMP and release all pressure from system.
 2. Remove handle and cover as described above.
 3. Remove plug from valve.
 4. Remove old gasket from body of valve.
 5. Be sure all debris and parts of old gasket are removed from groove.
 6. Pretreat gasket with Fuller C27F-A and C27F-B Icorin. Apply H.B. Fuller "Ultraflex" 4814AF glue sparingly around perimeter groove of valve seat.
- CAUTION** Closely follow glue manufacturers instructions when using glue.
7. Insert new gasket into groove with rounded bead exposed. Tap down firmly to seat new gasket evenly. Replace plug and reassemble as in "Replacing Cover" above.
 8. Make sure plug is in correct position.

- **Replacing Plug and Gasket (1½" Valve):**

1. STOP PUMP and release all pressure from system.
2. Remove handle and cover as described above.
3. Remove plug and gasket from valve.
4. Install new plug; reassemble as in "Replacing Cover" above.
5. Make sure plug is in correct position.

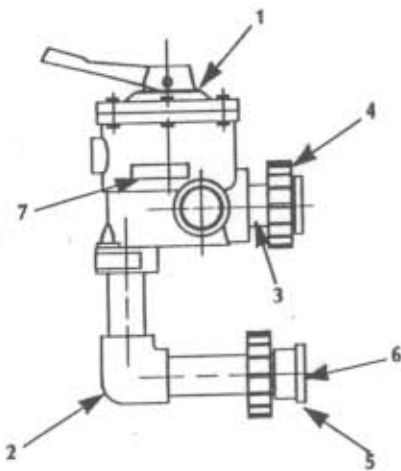


REPAIR PARTS LIST FOR PIPING ONLY FOR COMPLETE 1½" VALVE ASSEMBLY Package Nos. F-150, F-151

Key No.	Part Description	No. Used	Package No. F-150	Package No. F-151
1	Valve Assembly*	1	14964-0014	14964-0014
2	Hose Nipple	1	23910-0017	23910-0017
3	Valve Connector	1	14967-0079	14967-0079
4	2 - 1½" x 1½" Hoses with Clamps	1	24750-0331	—
4	2 - 1½" x 2" Hoses with Clamps	1	—	24750-0624

• Not Illustrated

* Includes Key Nos. 2 and 3; see Page 9 for internal parts.



MODEL NO. WC212-143P

Key No.	Part Description	No. Used	Part No.
1	Valve Assembly*	1	14964-0000
2	Pipe Assembly	1	WC137-522P
3	T.O.E. Nipple 1½"	1	WC37-45P
4	Collar-Union	2	U11-200P
5	Adapter-Union Assembly	2	U111-209P
6	O-Ring	2	U9-362
7	Instruction Label	1	60000-0209

* Not available separately; see Page 9 for internal parts.

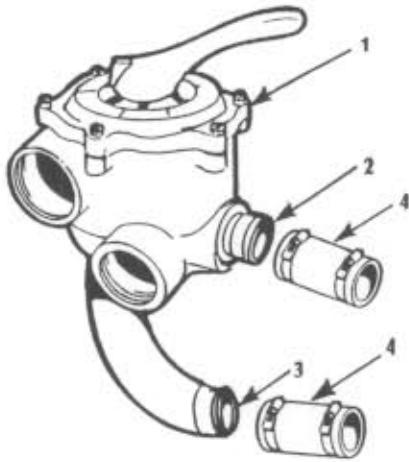
Valve to Pump Connector Kit FOR MODEL NO. 14962-0105 TOP MOUNT VALVE

REPAIR PARTS LIST

Key No.	Part Description	No. Used	Kit Number 24201-1118
•1	Male Adapter	2	U78-767P
•2	1½" Hose Clamp	2	31787-0010
•3	1½" Hose x 39" Lg.	1	24204-0007

• Not Illustrated

REPAIR PARTS LIST FOR PIPING ONLY FOR COMPLETE 2" VALVE ASSEMBLY Package No. F-152

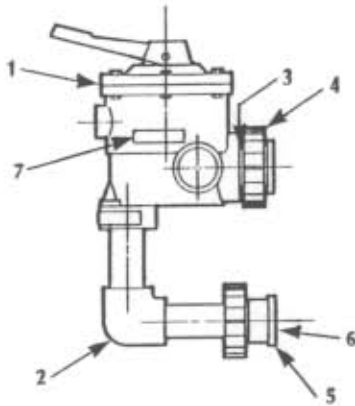


Key No.	Part Description	No. Used	Package No. F-152
1	Valve Assembly*	1	14971-0012
2	Hose Nipple	1	80981-0216
3	Valve Connector	1	14971-0013
4	2 - 2" x 2" Hoses with Clamps	1	24750-0341
•	Caution Label	1	60000-0198
•	Instruction Label	1	60000-0706

• Not Illustrated

* Includes Key Nos. 2 and 3; see Page 10 for internal parts.

MODEL NOS. WC212-144P, WC212-138B

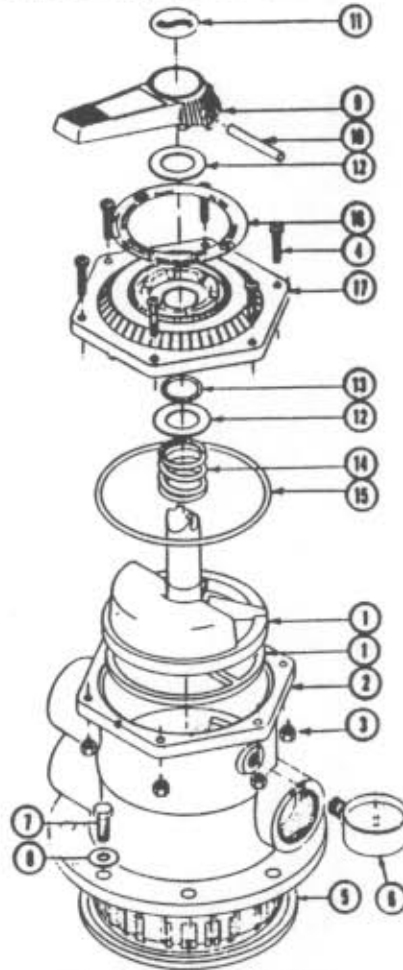


Key No.	Part Description	No. Used	Part No.	
			WC212-144P	WC212-138B
1	Valve Assembly*	1	14971-0012	WC212-138
2	Pipe Assembly	1	WC137-510P	WC137-511P
3	Nipple 2" T.O.E.	1	WC37-508P	—
3	Adapter 2"	1	—	U78-930P
4	Collar-Union	2	U11-200P	—
5	Adapter-Union	2	U11-199P	—
5	Coupling 2"	1	—	U78-931P
6	O-Ring	2	U9-362	—
7	Instruction Label	1	60000-0706	WC27-161
•	Caution Label	1	60000-0198	60000-0198
•	Caution Label	1	60000-0257	—

* Not available separately see Page 10 for internal parts.

Multi-Port Top Mount Valve Assembly - 1-1/2"

MODEL 14962-0105

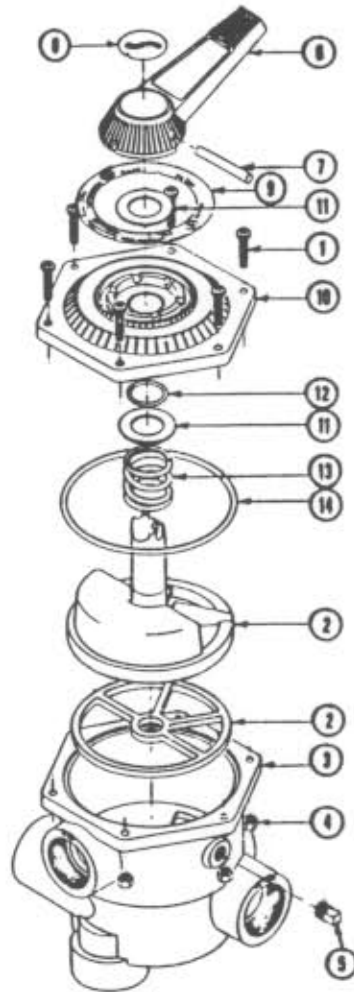


REPAIR PARTS LIST

Key No.	Part Description	No. Used	Model 14962-0105	Kit No.
1	Plug with Gasket	1	14962-0017	
2	Body Assembly	1	14962-0037	
3	Hex Nut, 1/4 - 20 St. Stl.	6	35407-0297	
4	Screw Machine (Pan Head), Phillips Slot - 1/4 - 20 x 1 1/4" St. Stl.	6	37337-3056	
5	Square Ring, BUNA-N	1	14962-0021	
6	Pressure Gauge - 0-60 PSI	1	33600-0023	
7	Bolt - Hex Head - 3/8" - 16 x 1" Long St. Stl.	8	U30-745S	
8	Washer - Flat - 3/8" Plain, St. Stl.	8	38907-0192	
9	Handle	1	14962-0123	
10	Dowel Pin - 3/16" x 2 1/2" S.S.	1	35857-0021	} 14962-0029
11	Label - Swimquip Logo	1	60000-0208	
12	Washer - Celcon	2	14962-0005	} 14962-0035
13	O-Ring - Parker #2-216, BUNA-N	1	35505-1228	
14	Spring - Compression	1	14962-0011	
15	O-Ring - Parker #2-255	1	35505-1272	} 14962-0041
16	Operating Label	1	60000-0209	
17	Lid	1	14964-0029	

Multi-Port Side Mount Valve Assembly - 1-1/2"

MODEL 14964-0014

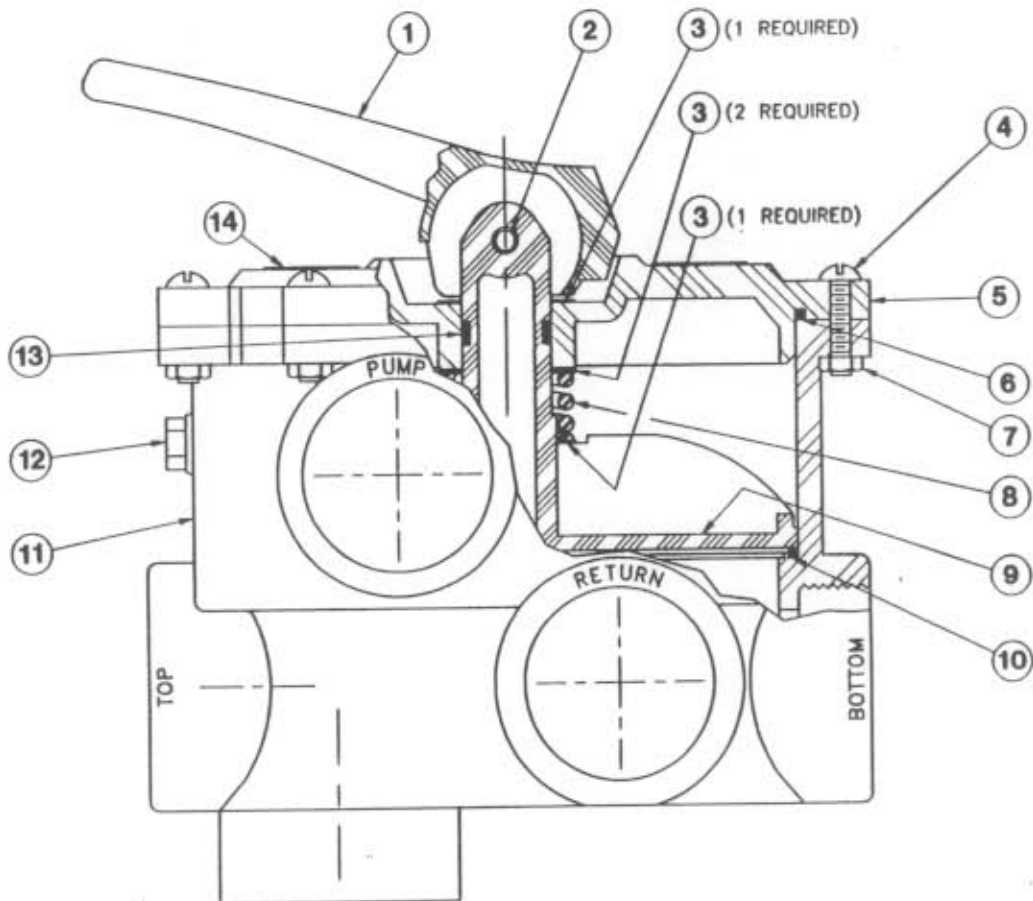


REPAIR PARTS LIST

Key No.	Part Description	No. Used	Model 14964-0000	Kit No.
1	Machine Screw - 1/4 - 20 x 1 1/4" St. Stl.	6	37337-3056	
2	Plug and Gasket	1	14962-0017	
3	Body Assembly	1	14963-0006	
4	Hex Nut - 1/4 - 20 St. Stl.	6	35407-0297	
5	Plug - 1/4"	1	36302-0017	
6	Handle	1	14962-0019	} 14962-0029
7	Dowel Pin - 5/16" x 2 1/2" St. Stl.	1	35857-0021	
8	Label	1	60000-0208	} 14964-0003
9	Label	1	60000-0252	
10	Lid	1	14962-0018	} 14962-0035
11	Washer	2	14962-0005	
12	"O" Ring	1	35505-1228	
13	Spring	1	14962-0011	
14	"O" Ring	1	35505-1272	

Multi-Port Side Mount Valve Assembly - 2"

MODELS 14971-0012, 14971-0000, WC212-138



REPAIR PARTS LIST

Key No.	Part Description	No. Used	Side Mount 14971-0012 14971-0000 2"	Side Mount WC212-138 2"
1	**Handle	1	14971-0004	All parts are the same as parts for No. 14971-0012 except valve body, which is mirror image. Use WC212-138 valve only with HRP36 filter.
2	**Handle Pin	1	14971-0008	
3	**Washer, St. Stl.	4	38917-0205	
4	Screw - 1/4 - 20 x 1 1/4", St. Stl.	10	37337-0056	
5	**Cover	1	*	
6	**"O" Ring	1	35505-1412	
7	Nut - 1/4 - 20", St. Stl.	10	35407-0297	
8	**Spring	1	14971-0006	
9	**Plug	1	*	
10	Gasket - Valve Seat	1	14971-0005	
11	Valve Body	1	•	
•	Sight Glass	1	14971-0009	
•	Sight Glass Gasket	1	14971-0011	
12	Plug	1	16920-0021	
13	**"O" Ring	2	35505-1223	
14	Operating Label	1	60000-0706	

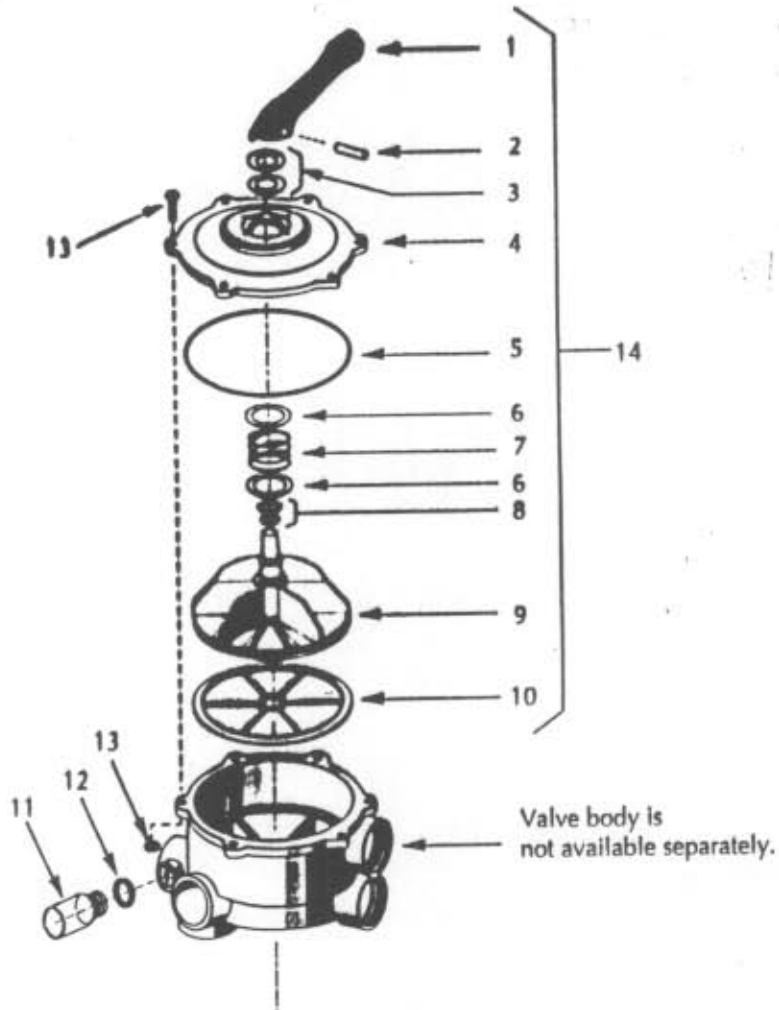
• Not Illustrated. Not sold separately.

* Not Sold Separately for either 14971-0012 or WC212-138. Order Kit No. 77704-0100

** Included in Kit No. 77704-0100

Sidemount Multiport Valve Kits – 2"

WC212-150PN — 2" Union Connection and
WC212-150PA — 2" Hose Connection



REPAIR PARTS LIST

Key No.	Part Description	Qty	Part No.
1	Handle (SP-715-F)	1	WC54-15
2	Pin (SP-710X-Z-7)	1	WC30-58
3	Bearings and Washer (SP-710-Z-14)	1	WC23-10
4	Valve Cover (SP-715-B)	1	WC3-40S
5	Cover O-Ring (SP-715-Z-1)	1	U9-243
6	Spring Bearing with Washer (SP-715-Z-2(A))	2	WC23-9
7	Spring (SP-603-S)	1	WC24-4
8	O-Ring and Teflon Seal (SP-735-GA)	1	U9-244
9	Key and Stem Ass'y (SP-715-C)	1	WC62-2
10	Gasket (SP-715-D)	1	WC20-22
11	Sight Glass w/O-Ring (SP-710-17-MA)	1	WC170-4
12	O-Ring (SP-710-N)	1	WC9-2
13	Screw and Nut (SP-710-Z-1)	10	WC30-55
14.	Cover and Handle Ass'y (SP-715-BA)	1	WC154-15
•	Union O-Ring	2	U9-362
•	2x2" Hose Connector Kit*	1	24750-0341
•	1-1/2x2" Hose Connector Kit*	1	24750-0624

• Not Illustrated * Kit Includes 2 hoses, 4 clamps.

Transparent Sight Glass Adaptor

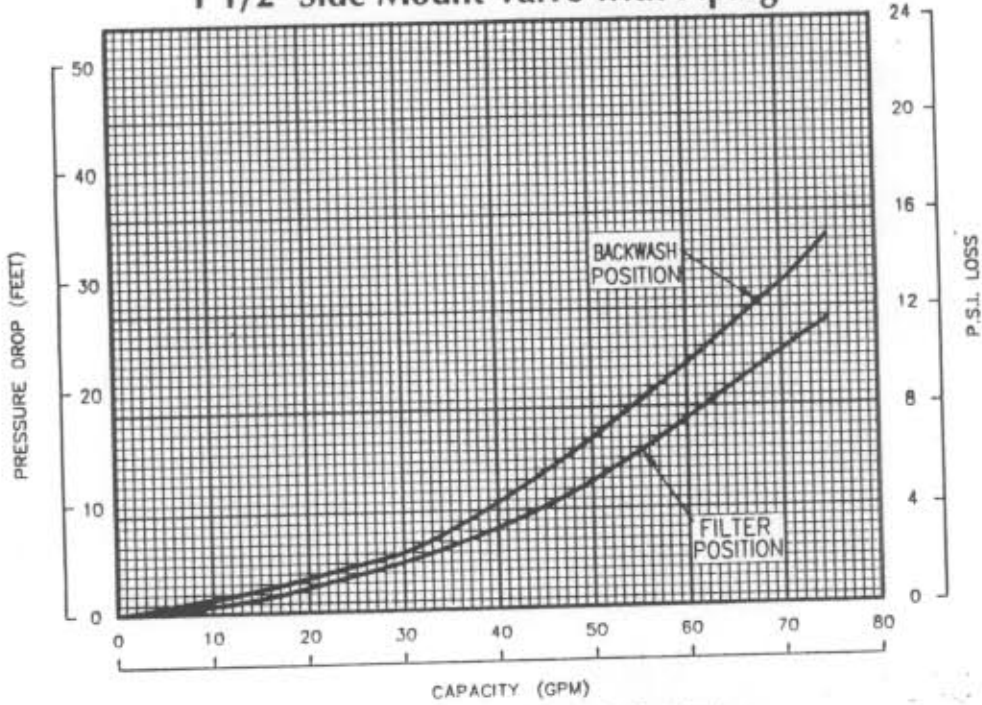


- Sight Glass Adaptor - 1-1/2" NPT & Hose Order #14962-0012
- Sight Glass Adaptor - 1-1/2" NPT Order #14962-0013
- Sight Glass Adaptor - 1-1/2" NPT & Hose-PVC (opaque) Order #14962-0025



Standard Sight Glass PART NUMBER 15410-0000

Performance Curves - Multi-Port Valves
1 1/2" Side Mount Valve with Piping



2" Side Mount Valve with Piping

