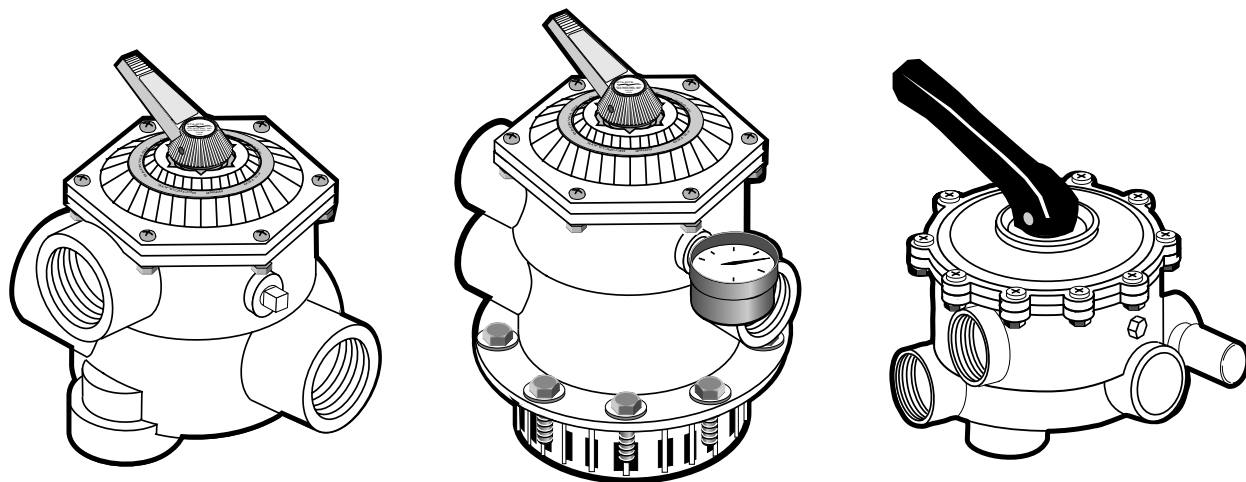


STA-RITE®

MULTI-PORT FILTER VALVE

O W N E R ' S M A N U A L



INSTALLATION, OPERATION & PARTS

MODELS

SIDE MOUNT – 1-1/2"

14964-0014
WC212-143P

TOP MOUNT – 1-1/2"

14962-0105

SIDE MOUNT – 2"

14971-0000
WC212-144P
WC212-138B
WC212-150PN
WC212-150PA

This manual should be furnished to the end user of this valve; its use will reduce service calls and chance of injury and will lengthen valve life.

Sta-Rite Pool/Spa Group

293 Wright Street, Delavan, WI 53115

International: 262-728-5551, FAX: 262-728-7550

www.starite.com

Union City, TN • Delavan, WI • Mississauga, Ont. • Murrieta, CA

© 2005, Sta-Rite Industries

S236 (Rev. 6/6/05)


MULTI-PORT FILTER VALVE


To avoid unneeded service calls, prevent possible injuries, and get the most out of your filter, READ THIS MANUAL CAREFULLY!

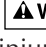
Table of Contents

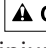
Safety Instructions	3
General Information	4
Functions	5
Maintenance	5-7
Repair Parts List	8-14
Performance Curves	14
Warranty	15

READ AND FOLLOW ALL INSTRUCTIONS!

 This is the safety alert symbol. When you see this symbol on your system or in this manual, look for one of the following signal words and be alert to the potential for personal injury.

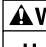
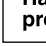
 **DANGER** warns about hazards that **will** cause death, serious personal injury, or major property damage if ignored.

 **WARNING** warns about hazards that **can** cause death, serious personal injury, or major property damage if ignored.

 **CAUTION** warns about hazards that **will** or **can** cause minor personal injury or property damage if ignored.

NOTICE indicates special instructions not related to hazards.

Carefully read and follow all safety instructions in this manual and on equipment. Keep safety labels in good condition; replace if missing or damaged.

 **WARNING** **Incorrectly installed or tested equipment may fail, causing severe injury or property damage.**
 **Hazardous pressure**
Read and follow instructions in owner's manual when installing and operating equipment. Have a trained pool professional perform all pressure tests.

1. Do not connect system to a high pressure or city water system.
2. Use equipment only in a pool or spa installation.
3. Trapped air in system can cause explosion. BE SURE all air is out of system before operating or testing equipment.

Before pressure testing, make the following safety checks:

- Check all clamps, bolts, lids, and system accessories before testing.
- Release all air in system before testing.
- Tighten Sta-Rite trap lids to 30 ft. lbs. (4.1 kg-cm) torque for testing.
- Water pressure for test must be less than 25 PSI (172 kPa).
- Water Temperature for test must be less than 100° F. (38° C).
- Limit test to 24 hours. After test, visually check system to be sure it is ready for operation. Remove trap lid and retighten hand tight only.

NOTICE: These parameters apply to Sta-Rite equipment only. For non-Sta-Rite equipment, consult manufacturer.

GENERAL

Inspect valve upon receipt and file claim with carrier if parts are damaged or missing.

Valve may be used with Sta-Rite DE or sand filters. See Table I.

Mating half of unions are on filters shown on Table I.

Connecting Multi-Port Valve To Filter System

For filters listed below, select correct valve clamp connector kit from the chart. Use with valves 14964-0014, 14962-0105, 14971-0000 (purchase separately).

TABLE I – Filter and connector kits to use with valves.

Valve No. 14971-0000 WC212-150PA Use with:		Valve No. 14964-0014 Use with:	
Filter	Kit	Filter	Kit
DEP36		DES25	
DEP51		DES36	
DEP83			24750-0331
		HRS16	
DES51		HRS20	
DES60	24750-0341		
		DEP36	
HRP20			
HRP24		HRP20	
HRP30		HRP24	24750-0624
HRS24		HRS24	
DES25			
DES36			
	24750-0624		
HRS16			
HRS20			

NOTICE: Valve WC212-138B for use with HRP36 filter *only*.

NOTICE: WC212-143P, WC212-144P, and WC212-150PN valves are furnished with union connections, matching the connections of the filter ports. DO NOT use pipe sealants on union collar (nut).

Use care before assembly not to damage union sealing surfaces or O-Ring. Install union O-Rings in groove; tighten union collar hand tight.

FOR SLIP FITTINGS: Use correct solvent/cement when fitting piping or adapters to slide valve. The valve body is ABS plastic, thus any good quality ABS to PVC solvent can be used, such as Weld-On #793 or #710. Use P70 (purple) primer on PVC components only. Allow a minimum of four hours drying time prior to pressure testing or operation. If ABS adapters are glued into valve ports in lieu of PVC fittings, use Weld-On Solvent #771, #1707 or #773.

⚠ WARNING To avoid serious personal injury or property damage, follow cement manufacturer's instructions exactly.

NOTICE: FOR THREADED FITTINGS: Use Plasto-Joint Stik¹ only. Other substances may degrade plastic and create poor joints and leaks. Do not over-tighten.



¹Lake Chemical Co., Chicago, IL

WARNING

**Hazardous pressure.
Can cause severe
injury or major
property damage
from valve blow up.**

Release all pressure
and read instructions
before working on
system.


FUNCTIONS OF THE MULTI-PORT VALVE

-  **To avoid severe injury and major property damage, stop pump before changing handle positions.**
-  **To avoid major property damage due to flooding, make sure pointer is accurately positioned and down all the way before restarting pump.**

Press down on handle to release pressure before turning.

1. FILTER – Normal position during operation of system.
2. BACKWASH – Position when operating system to purge filter of accumulated debris. This normally is necessary when filter pressure gauge reads 10 PSI higher than starting pressure on a clean filter. Consult your filter operating instructions.
3. RINSE – This position is only used with sand filters and is designed to flush stray sand from system before returning to filter operation after backwashing. Consult your filter operating instructions.
4. CLOSED – Valve may be set in closed position when servicing filter tanks located below water level.
5. RECIRCULATE – This position permits pump to continue recirculating water (chemicals, heat, etc.) without flow through filter. This is advantageous when filter or its components are being repaired or replaced.
6. WASTE – This position permits draining or lowering of pool water level. When pump is stopped with valve in this position, quickly move handle to another position to avoid air getting into piping.

VALVE MAINTENANCE

-  **To avoid severe personal injury and major property damage, stop pump and release all pressure from system before servicing valve.**

No regular maintenance is required for proper operation of multi-port valve.

Winterizing For Freezing Climates:

Place valve handle in an intermediate position, between regular setting positions.

Part Replacement:

Replacing Handle:

1. STOP PUMP and release all pressure from system.
2. Place handle in “FILTER” position.
3. Remove stainless steel pin from handle.
4. Remove handle and replace with new one, making sure pointer is in “FILTER” position.
5. Replace stainless steel pin by tapping lightly into place with hammer and punch.

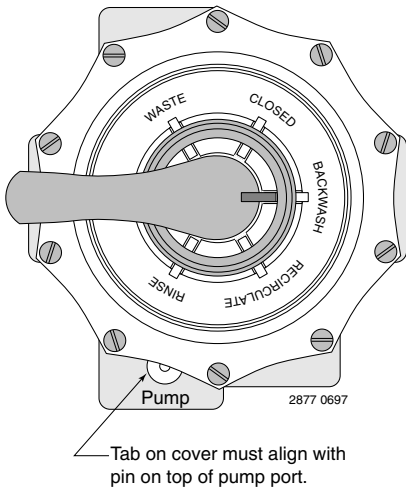


Figure 1 – Cover alignment

To prevent flooding, make sure that system is drained or isolation valves are closed before opening multi-port valve.

Replacing Cover and Plug Assembly (as a unit):

1. STOP PUMP and release all pressure from system.
2. Remove all bolts and nuts around perimeter of cover.
3. Remove assembly by lifting straight up.
4. Align cover pin (see Figure 1) and install new cover and plug. Press down on cover to allow bolts to engage nuts; tighten each bolt securely.

Replacing Internal Valve Parts:

1. STOP PUMP and release all pressure from system.
2. Place handle in “FILTER” position.
3. Remove handle pin and handle.
4. Remove washer.
5. Remove all bolts and nuts.
6. Remove cover by lifting straight up, while holding plug shaft down with thumb.
7. While disassembled, check condition of plug, rubber gasket, spring, O-Ring, and internal plastic washer. If any of these parts appear worn, replace them.
8. Before reinstalling cover, be sure plug is in same position as when cover was removed.
9. Make sure tab on valve cover aligns with pin on top of pump port (see Figure 1). Press down on cover to allow bolts to engage nuts. Tighten each bolt securely.
10. Replace washer, handle and steel pin, making sure handle is in filter position.

Replacing Plug Gasket (2" Valve):

1. STOP PUMP and release all pressure from system.
2. Remove handle and cover as described on Pages 5 and 6.
3. Remove plug from valve.
4. Remove old gasket from body of valve.
5. Be sure all debris and parts of old gasket are removed from groove.
6. Pretreat gasket with Fuller C27F-A and C27F-B Icortin. Apply H.B. Fuller "Ultraflex" 4814AF glue sparingly around perimeter groove of valve seat.

▲ CAUTION Closely follow glue manufacturers instructions when using glue.

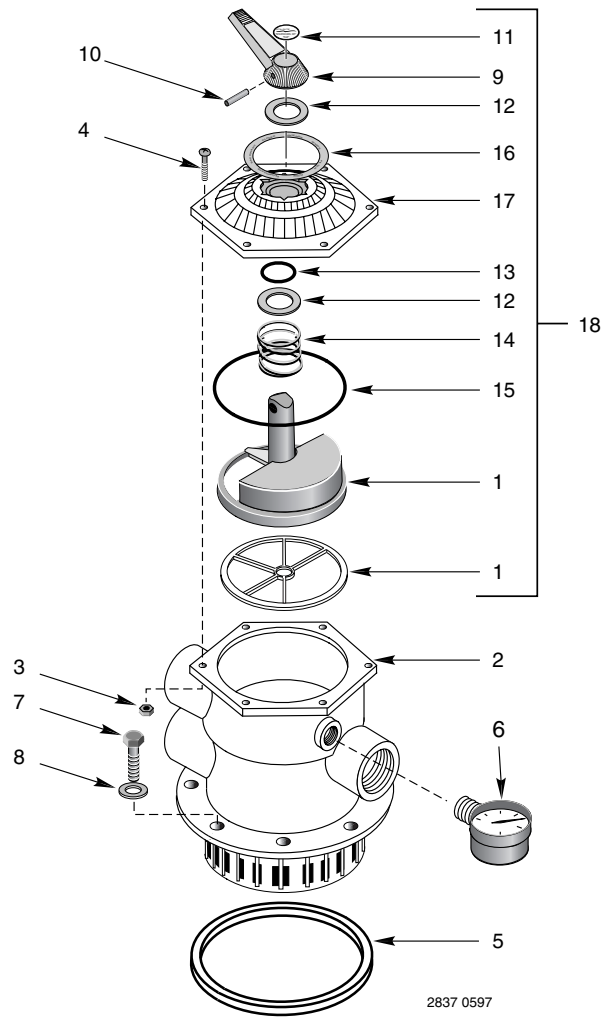
7. Insert new gasket into groove with rounded bead exposed. Tap down firmly to seat new gasket evenly. Replace plug; make sure plug is in correct position.
8. Align cover pin (see Figure 1) and install cover. Press down on cover to allow bolts to engage nuts; tighten each bolt securely.

Replacing Plug Gasket (1½" Valve):

1. STOP PUMP and release all pressure from system.
2. Remove handle and cover as described on Pages 5 and 6.
3. Remove gasket from valve.
4. Install new gasket.
5. Align cover pin (see Figure 1) and install cover. Press down on cover to allow bolts to engage nuts; tighten each bolt securely.

Topmount Multiport Valve Assembly – 1½"

Model 14962-0105



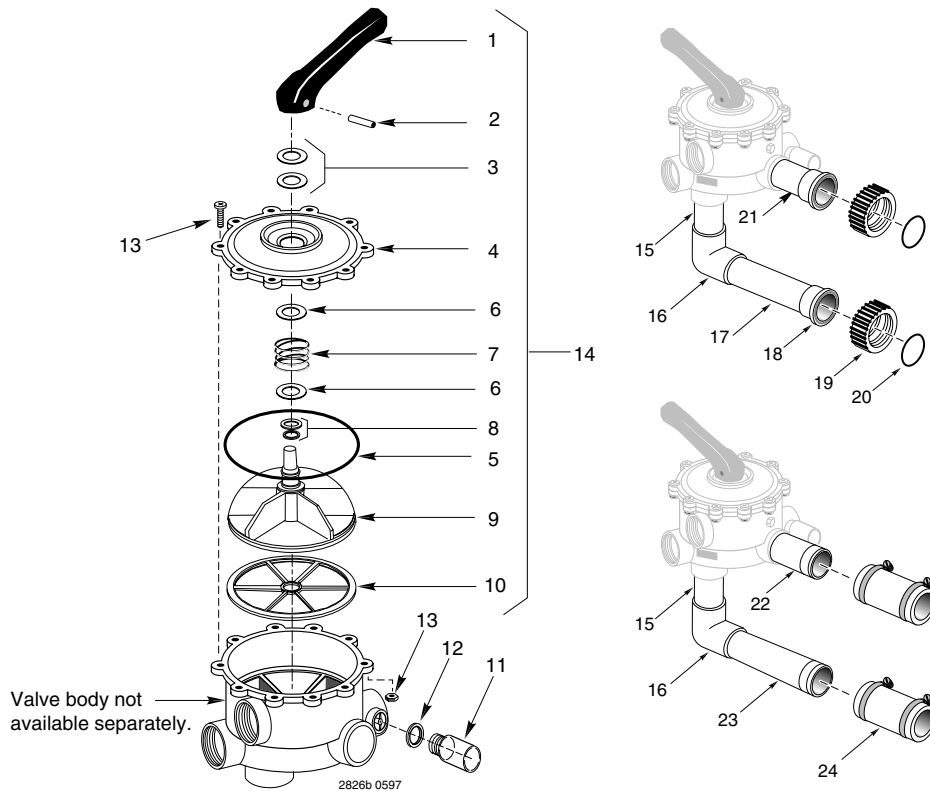
REPAIR PARTS LIST

Key No.	Description	Qty.	Part Number	Kit Number
1	Plug with Gasket	1	14962-0017	} 14962-0029
2	Body Assembly	1	14962-0037S	
3	Hex Nut, ¼-20 S.S.	6	35407-4297	} 14962-0035
4	Screw, ¼-20x1¼" S.S.	6	37337-3056	
5	Square Ring, BUNA-N	1	14962-0021	} 14962-0041
6	Pressure Gauge – 0-60 PSI	1	15060-0000T	
7	Bolt, ⅜-16x1" S.S.	8	U30-74SS	
8	Washer, Flat ⅜" Plain S.S.	8	38907-3192	
9	Handle	1	14962-0123	
10	Dowel Pin, ⅝x2½" S.S.	1	35857-0021	
11	Label – Swimquip Logo	1	WC27-91	
12	Washer, Celcon	2	14962-0005	
13	O-Ring, Parker #2-216, BUNA-N	1	35505-1228	
14	Spring, Compression	1	14962-0011	
15	O-Ring, Parker #2-255	1	35505-1272	
16	Operating Decal	1	32155-4122	
17	Valve Cover	1	14962-0028	
18	Plug and Cover Assembly	1	77704-0102	

Sidemount Multiport Valve Assembly – 2"

WC212-150PN – Valve with 2" Union Connection

WC212-150PA – Valve with 2" Hose Connection



REPAIR PARTS LIST

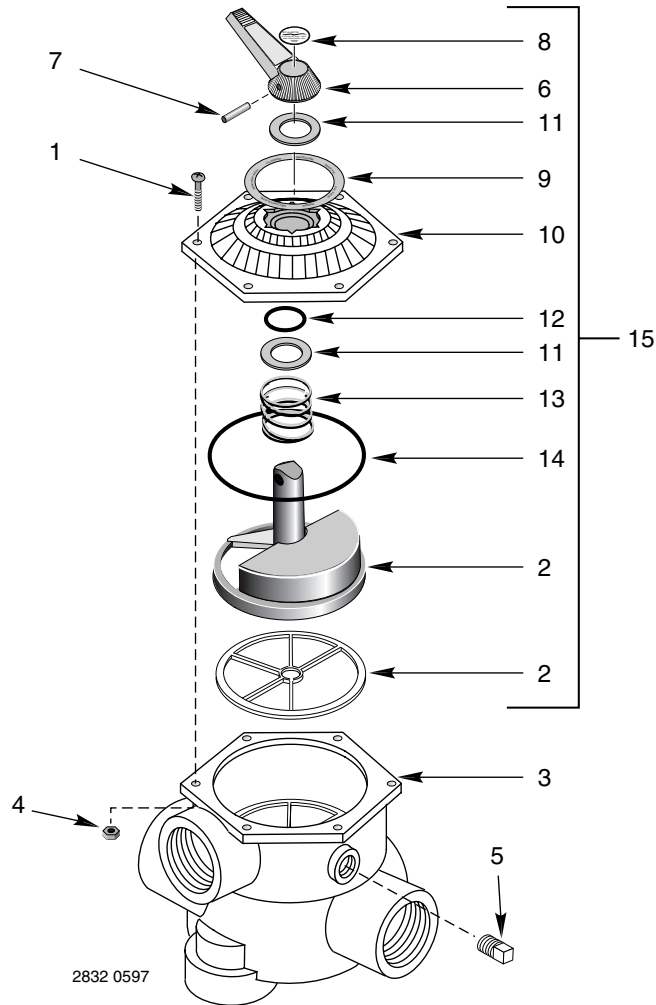
Key No.	Part Description	Qty	Model	
			WC212-150PN	WC212-150PA
1	Handle (SP-715-F)	1	WC54-15	WC54-15
2	Pin (SP-710X-Z-7)	1	WC30-58	WC30-58
3	Bearings and Washer (SP-710-Z-14)	1	WC23-10	WC23-10
4	Valve Cover (SP-715-B)	1	WC3-40S	WC3-40S
5	Cover O-Ring (SP-715-Z-1)	1	U9-243	U9-243
6	Spring Bearing with Washer (SP-715-Z-2[A])	2	WC23-9	WC23-9
7	Spring (SP-603-S)	1	WC24-4	WC24-4
8	O-Ring and Teflon Seal (SP-735-GA)	1	U9-244	U9-244
9	Key and Stem Assembly (SP-715-C)	1	WC62-2	WC62-2
10	Gasket (SP-715-D)	1	WC20-22	WC20-22
11	Sight Glass w/O-Ring (SP-710-17-MA)	1	WC170-4	WC170-4
12	O-Ring (SP-710-N)	1	WC9-2	WC9-2
13	Screw and Nut (SP-710-Z-1)	10	WC30-55	WC30-55
14	Cover and Handle Assembly (SP-715-BA)	1	WC154-15	WC154-15
15	Nipple, 2"x4.25" PE	1	80971-0421	80971-0421
16	Elbow, 90 degree	1	24761-0091	24761-0091
17	Nipple, 2"x7.25" PE	1	80971-0721	–
18	Adapter, Union 2" Slip	2	U11-196P	–
19	Collar, Union 2"	2	U11-200P	–
20	Union O-Ring	2	U9-362	–
21	Nipple, 2"x3.38" PE	1	80971-0331	–
22	Nipple, 2"x3.38" TOE	1	–	80981-0336
23	Nipple, 2"x7.25" TOE	1	–	80981-0726
24	2"x2" Hoses with Clamps (Set of 2)*	–	–	24750-0341
25	1½"x2" Hoses with Clamps (Set of 2)*	–	–	24750-0624

* Kit includes 2 hoses, 4 clamps.

Sidemount Multiport Valve Assembly – 1½"

Model WC212-143P – Valve with 1½" Union Connection

Model 14964-0014 – Valve with 1½" Hose Connection

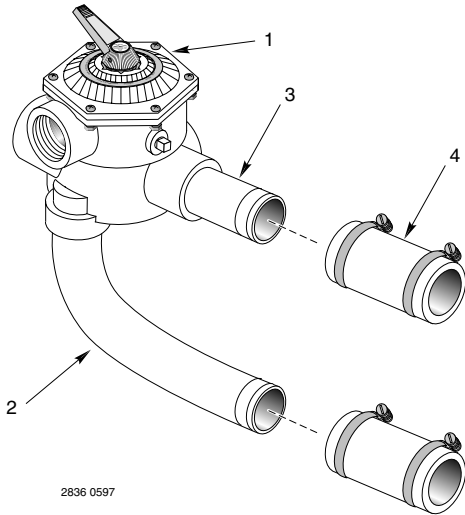


REPAIR PARTS LIST

Key No.	Description	Qty.	Part Number	Kit Number
1	Machine Screw, ¼-20x1¼" S.S.	6	37337-3056	
2	Plug and Gasket	1	14962-0017	
3	Body Assembly	1	14963-0007	
4	Hex Nut, ¼-20 S.S.	6	35407-0297	
5	Pipe Plug, ¼"	1	WC78-40T	
6	Handle	1	14962-0019	} 14962-0029
7	Dowel Pin, ⅝"x2½" S.S.	1	35857-0021	
8	Label	1	WC27-91	} 14962-0041
9	Operating Decal	1	32155-4122	
10	Valve Cover	1	14962-0028	} 14962-0035
11	Washer	2	14962-0005	
12	O-Ring	1	35505-1228	
13	Spring	1	14962-0011	
14	O-Ring	1	35505-1272	
15	Plug and Cover Assembly	1	77704-0103	

Repair Parts List For Piping Only For Complete 1½" Valve Assembly

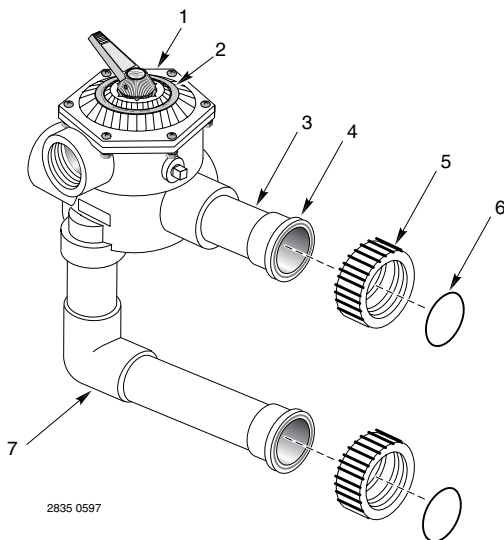
Model No. 14964-0014



Key No.	Description	Qty.	Part Number
1	Valve Assembly*	1	14964-0014
2	Valve Connector	1	14967-0079
3	Hose Nipple	1	23910-0017
4	1½" x 1½" Hoses with Clamps (Kit of 2)		24750-0341
4	1½" x 2" Hoses with Clamps (Kit of 2)		24750-0624

* Includes Key Nos. 2 and 3; see Page 10 for internal parts.

Model No. WC212-143P



Key No.	Description	Qty.	Part Number
1	Valve Assembly*	1	14964-0000
2	Operating Decal	1	32155-4122
3	Pipe Assembly	1	WC137-522P
4	T.O.E. Nipple, 1½"	1	WC37-45P
5	Adapter, Union	2	U111-209P
6	Collar, Union	2	U11-200P
7	O-Ring	2	U9-362

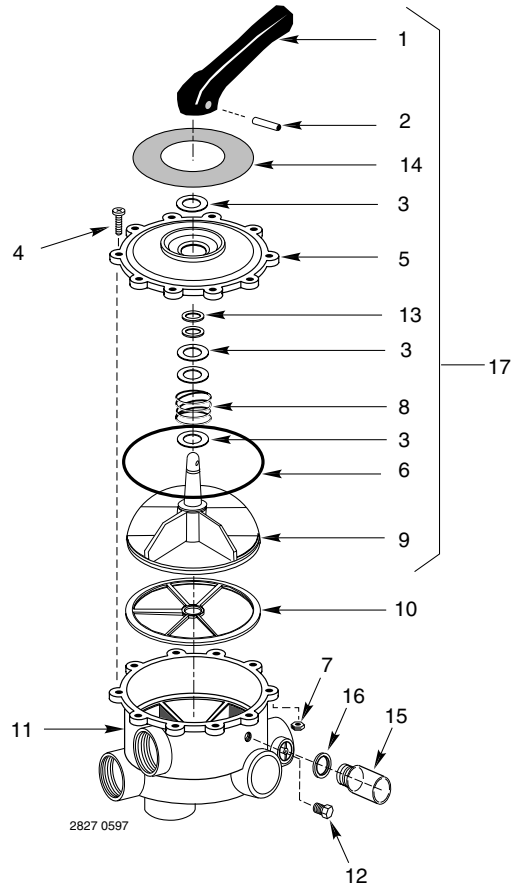
* Not available separately; see Page 10 for internal parts.

Sidemount Multiport Valve Assembly – 2"

Model WC212-144P – Valve with 2" Union Connection

Model 14971-0000 – Valve with 2" Hose Connection

Model WC212-138B – Valve with 2" Union Connection



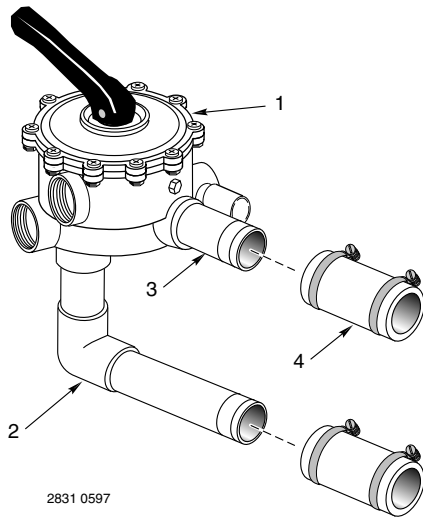
REPAIR PARTS LIST

Key No.	Description	Qty.	14971-0000 WC212-144P WC212-138B	Side Mount WC212-138 2"
1	Handle	1	14971-0004	
2	Handle Pin	1	14971-0008	
3	Washer, S.S.	4	38917-0205	
4	Screw, ¼-20x1¼" S.S.	10	37337-0056	
5	Cover	1	*	All parts are the same as parts for Model 14971-0012 except valve body, which is a mirror image. Use WC212-138 valve only with HRP36 filter.
6	O-Ring	1	35505-1412	
7	Nut, ¼-20 S.S.	10	35407-0297	
8	Spring	1	14971-0006	
9	Plug	1	*	
10	Gasket, Valve Seat	1	14971-0005	
11	Valve Body	1	*	
12	Drain Plug	1	16920-0021	
13	O-Ring	2	35505-1223	
14	Operating Label	1	60000-0706	
15	Sight Glass	1	14971-0009	
16	Sight Glass Gasket	1	14971-0011	
17	Cover and Plug Assembly		77704-0100	

* Not sold separately.

Repair Parts List For Piping Only For Complete 2" Valve Assembly

Model No. 14971-0000

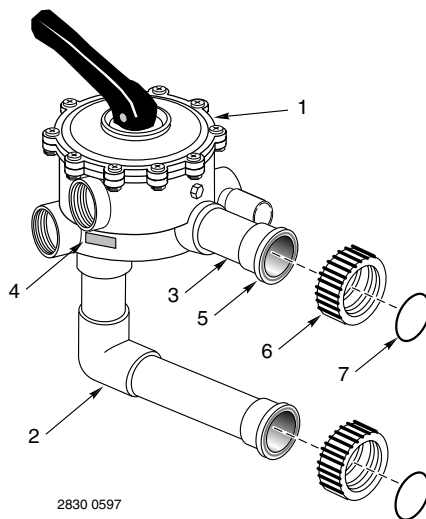


Key No.	Description	Qty.	Part Number
1	Valve Assembly*	1	14971-0012
2	Valve Connector	1	14971-0013
3	Hose Nipple	1	80981-0216
4	2" x 2" Hoses with Clamps (Kit of 2)	1	24750-0341
	• Caution Label	1	60000-0198
	• Instruction Label	1	60000-0706

• Not Illustrated.

* Includes Key Nos. 2 and 3; see Page 12 for internal parts.

Model No. WC212-144P

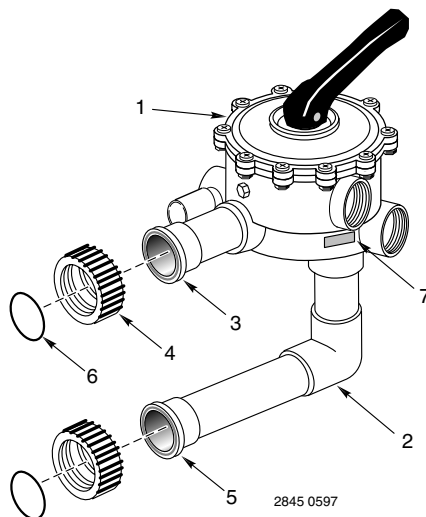


Key No.	Description	Qty.	Part Number
1	Valve Assembly*	1	14971-0012
2	Pipe Assembly	1	WC137-510P
3	T.O.E. Nipple, 2"	1	WC37-508P
4	Instruction Label	1	60000-0706
5	Adapter, Union	2	U111-200P
6	Collar, Union	2	U11-199P
7	O-Ring	2	U9-362
	• Caution Label	1	60000-0198
	• Caution Label	1	60000-0257

• Not Illustrated.

* Not available separately; see Page 12 for internal parts.

Model No. WC212-138B

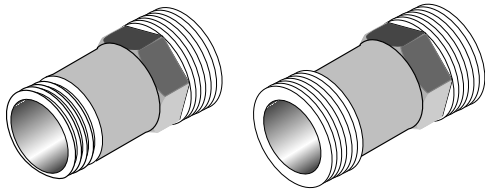


Key No.	Description	Qty.	Part Number
1	Valve Assembly*	1	WC212-138
2	Pipe Assembly	1	WC137-511P
3	Adapter, 2"	2	U78-930P
4	Collar, Union	2	U11-199P
5	Coupling, 2"	1	U78-931P
6	O-Ring	2	U9-362
7	Instruction Label	1	WC27-161
	• Caution Label	1	60000-0198

• Not Illustrated.

* Not available separately; see Page 12 for internal parts.

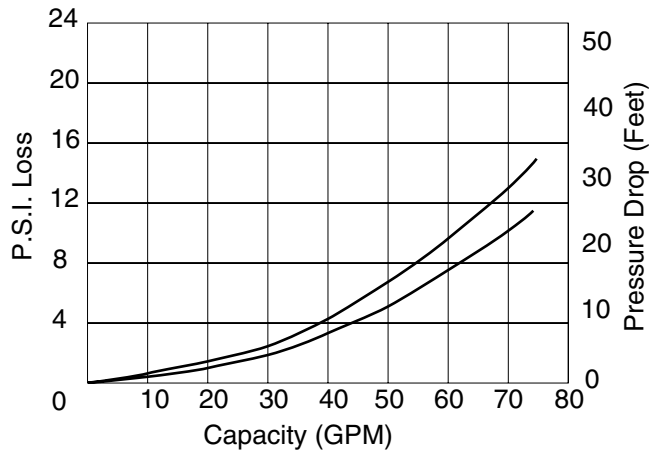
Sight Glass, Sight Glass Adaptors



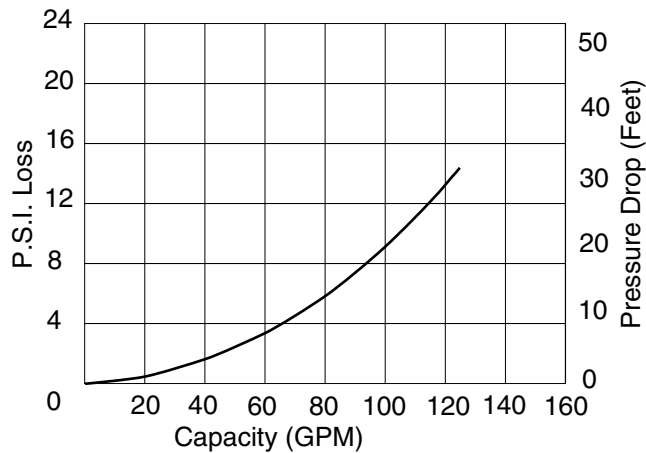
- Sight Glass Adaptor – 1½" NPT & HoseOrder #14962-0012
- Sight Glass Adaptor – 1½" NPTOrder #14962-0013
- Male Adaptor – 1½" NPT to 1½" ID HoseOrder #U78-767P
- Not illustrated.

Performance Curves – Multi-Port Valves

1½" Side Mount Valve with Piping



2" Side Mount Valve with Piping



STA-RITE LIMITED WARRANTY

Pumps, filters, skimmers, underwater lights (excluding bulbs), accessories and fittings manufactured by Sta-Rite are warranted to be free of defects in material and/or workmanship for one (1) year from the original date of installation.

The foregoing warranties relate to the original consumer purchaser ("Purchaser") only. Sta-Rite Industries shall have the option to repair or replace the defective product, at its sole discretion. Purchasers must pay all labor and shipping charges necessary to replace the product covered by this warranty. Requests for warranty service must be made through the installing dealer. This warranty shall not apply to any product that has been subject to negligence, misapplication, improper installation or maintenance, or other circumstances which are not in Sta-Rite's direct control. Failure to have product installed by a professional in compliance with local codes will void any and all manufacturers warranty.

This warranty sets forth Sta-Rite's obligation and Purchaser's exclusive remedy for defective products.

STA-RITE SHALL NOT BE LIABLE FOR ANY CONSEQUENTIAL, INCIDENTAL OR CONTINGENT DAMAGES WHATSOEVER.

THE FOREGOING WARRANTIES ARE EXCLUSIVE AND IN LIEU OF ALL OTHER EXPRESS WARRANTIES. IMPLIED WARRANTIES, INCLUDING BUT NOT LIMITED TO THE IMPLIED WARRANTIES OF MERCHANTABILITY AND FITNESS FOR A PARTICULAR PURPOSE, SHALL NOT EXTEND BEYOND THE DURATION OF THE APPLICABLE EXPRESS WARRANTIES PROVIDED HEREIN.

Some states do not allow the exclusion or limitation of incidental or consequential damages or limitations on how long an implied warranty lasts, so the above limitations or exclusion may not apply to you. This warranty gives you specific legal rights and you may also have other rights which vary from state to state.

Product Specific Warranties (from date of installation)

Product Family	Limited Warranty	Exceptions
Filters	1 Year	System 3 Tank Bodies - 10 Yrs
Filter Valves	1 Year	
Pumps	1 Year	
Heaters	2 Years	*Commercial Application - 1 Yr
Controls	1 Year	
Above Ground Systems	1 Year	
Lights and Niches	1 Year	Lamps and Bulbs - 90 Days
White Goods	1 Year	
Maintenance Equipment	90 Days	
Drainer/Utility Pumps	90 Days	
Replacement Parts	90 Days	
Cleaners: Lil Shark	1 Year	
Cleaners: Calypso	1 Year	
Cleaners: Pool Shark	2 Years	Footpad and Seal Flaps - 1 Yr
Cleaners: Great White	2 Years	

* Commercial and multi-family application.

Retain this warranty certificate in a safe and convenient location for your records.

For technical information about this product, contact the installer or call Sta-Rite at 262-728-9181.

Visit www.staritepool.com

- for more information about Sta-Rite products listed above
- to locate a Sta-Rite dealer near you

CREATE A RECORD OF YOUR WARRANTY AT STA-RITE:

- Complete a warranty registration at www.staritepool.com by clicking on "Register Products" and selecting Sta-Rite Pool **OR**
- Complete bottom portion completely and mail within 10 days of installation to Sta-Rite, Attn.: Pool Warranty Dept., 293 Wright St., Delavan, WI 53115



Warranty Registration Card

Name _____

New installation Replacement

Address _____

Years pool has been in service less than 1 1-3 3-5 5-10

City _____ State _____ Zip _____

This product was purchased from:

Installation (or Purchase) Date _____

Company name _____

Product Purchased _____

Address _____

Model Number _____

City _____ State _____ Zip _____

